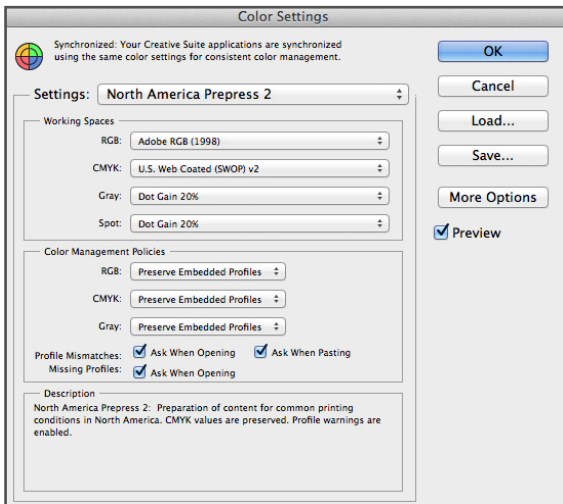


# QUICK TIPS

## Managing Color Settings:



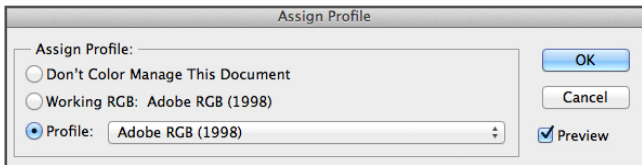
The print process starts as soon as a file is created. It is a good idea to set your color preferences before starting.

Edit menu > Color Settings.

Settings > North America Prepress 2.

Now your working spaces to Adobe RGB 1998 and U.S. Web Coated (SWOP) v2.

## Assigning a Color Profile:



Assign Profile lets you tag an image with a specified profile or untag an image by removing its profile. No conversions are made; it simply applies an interpretation to the numbers in the image.

Edit menu > Assign Profile.

Toggle on the Preview option.

Select an option from the Assign Profile menu, and click OK.

## Converting a Color Profile:

Convert to Profile

Source Space  
Profile: Adobe RGB (1998)

Destination Space  
Profile: Working CMYK - U.S. Web Coated (SWOP) v2

Conversion Options  
Engine: Adobe (ACE)  
Intent: Relative Colorimetric

Use Black Point Compensation  
 Use Dither  
 Flatten Image to Preserve Appearance

OK  
Cancel  
 Preview  
Advanced

Convert to Profile

Source Space  
Profile: sRGB IEC61966-2.1

Destination Space  
Profile: Working RGB - Adobe RGB (1998)

Conversion Options  
Engine: Adobe (ACE)  
Intent: Relative Colorimetric

Use Black Point Compensation  
 Use Dither  
 Flatten Image to Preserve Appearance

OK  
Cancel  
 Preview  
Advanced

By converting a color profile, the color numeric numbers change.

Edit menu > Convert to Profile.

Under Destination Space, choose the color profile to which you want to convert the document's colors.

Under Conversion Options, specify a color management engine and a rendering intent.

Toggle on the Preview option.

Click OK.

The Imaging Center works in both an **Adobe RGB 1998** and **U.S. Web Coated CMYK (SWOP) v2** color space.

We do not work in any other color profile and will convert your file if necessary.

For more information, check out our full **Imaging Center Guide**.