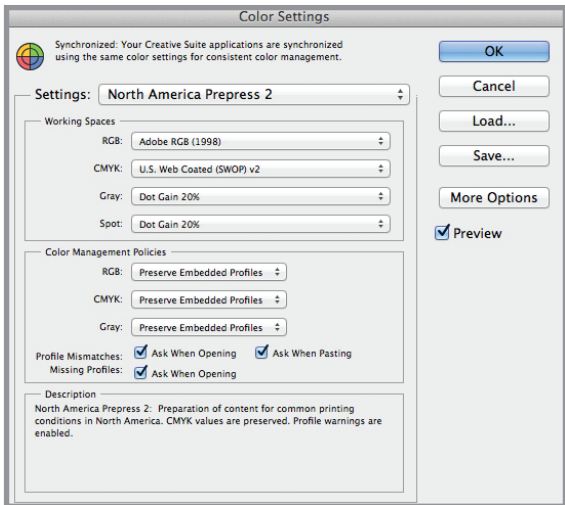


# QUICK TIPS

## Managing Color Settings:



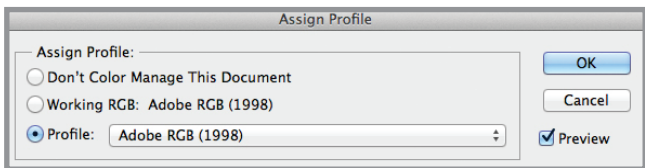
The print process starts as soon as a file is created. It is a good idea to set your color preferences before starting.

Edit menu > Color Settings.

Settings > North America Prepress 2.

Now your working spaces to Adobe RGB 1998 and U.S. Web Coated (SWOP) v2.

## Assigning a Color Profile:



Assign Profile lets you tag an image with a specified profile or untag an image by removing its profile. No conversions are made; it simply applies an interpretation to the numbers in the image.

Edit menu > Assign Profile.

Toggle on the Preview option.

Select an option from the Assign Profile menu, and click OK.

## Converting a Color Profile:

Convert to Profile

Source Space  
Profile: Adobe RGB (1998)

Destination Space  
Profile: Working CMYK - U.S. Web Coated (SWOP) v2

Conversion Options  
Engine: Adobe (ACE)  
Intent: Relative Colorimetric  
 Use Black Point Compensation  
 Use Dither  
 Flatten Image to Preserve Appearance

OK  
Cancel  
 Preview  
Advanced

Convert to Profile

Source Space  
Profile: sRGB IEC61966-2.1

Destination Space  
Profile: Working RGB - Adobe RGB (1998)

Conversion Options  
Engine: Adobe (ACE)  
Intent: Relative Colorimetric  
 Use Black Point Compensation  
 Use Dither  
 Flatten Image to Preserve Appearance

OK  
Cancel  
 Preview  
Advanced

By converting a color profile, the color numeric numbers change.

Edit menu > Convert to Profile.

Under Destination Space, choose the color profile to which you want to convert the document's colors.

Under Conversion Options, specify a color management engine and a rendering intent.

Toggle on the Preview option.

Click OK.

The Imaging Center works in both an **Adobe RGB 1998** and **U.S. Web Coated CMYK (SWOP) v2** color space.

We do not work in any other color profile and will convert your file if necessary.

Do not change the color space by toggling between RGB and CMYK via Image menu > Mode. You can lose critical pixel data by using this method.

For more information, check out our full Imaging Center Guide.