

## Configuration Wizard

The enrollment workflow for Mac OS X devices follows the same process as the other OSes. The user accepts the AUP, logs in with Active Directory or other credentials, then the configuration wizard runs to configure the device and migrate the user to the secure network.

The Wizard application can be set to start automatically or start manually from the download page. There is also an option for bypassing the Wizard application and using a network profile to configure the wireless network settings. These user experience options are set in the ES Admin UI, but the user experience can also vary depending on the Java version detected (if installed), the browser, or the OS version on the device.

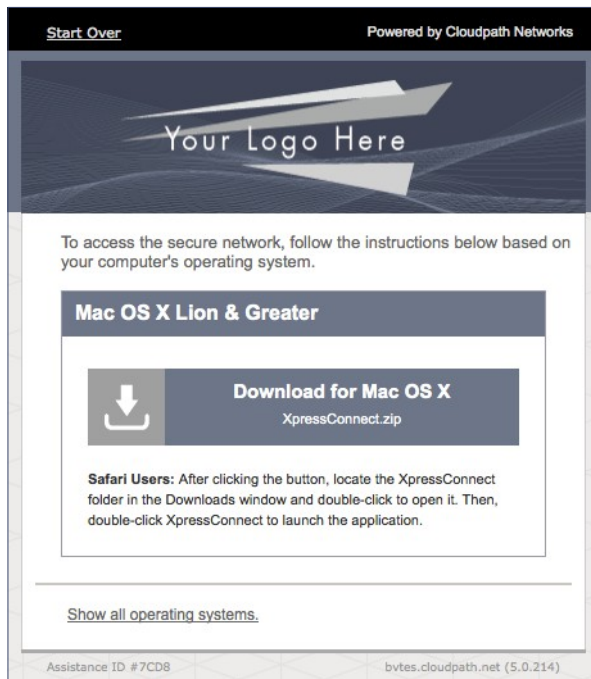
## Download and Run Application

The default user experience setting for Mac OS X is to download the application to the user device, run the application to configure the wireless settings, and migrate the device to the secure network.

### Download Page

The application detects the device user agent and displays the appropriate Mac OS X-specific download and configuration instructions.

FIGURE 7. Mac OS X Download Page

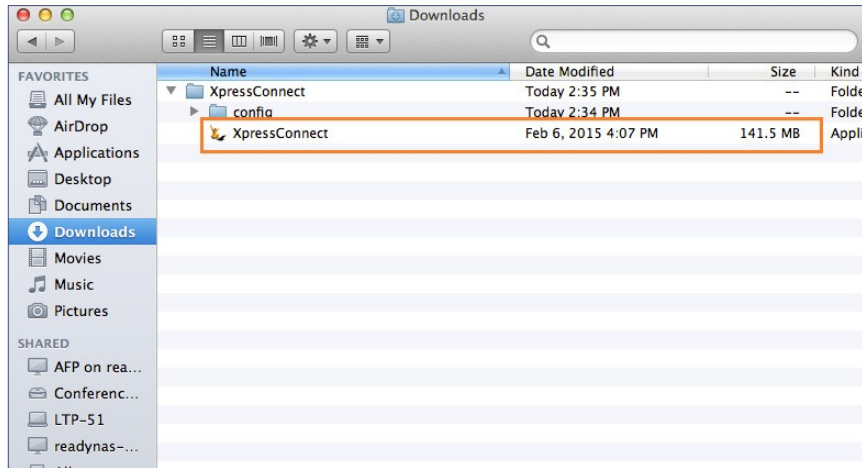


Click the down arrow to download the zip file, which contains the application files.

## Open Downloaded Files

Browse to the Downloads folder, open the *Cloudpath/config* folder to locate the *Cloudpath* application file.

**FIGURE 8.** Open Download File

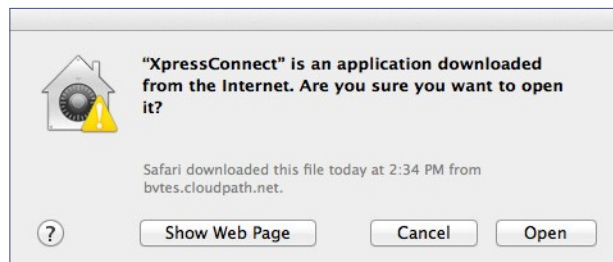


Double-click the Cloudpath application to start the Wizard, which runs through the configuration and migration process.

## Confirm Open File

Your browser or operating system may prompt you to confirm that you want to open the application file.

**FIGURE 9.** Confirm Open File



Click *Open* to continue.

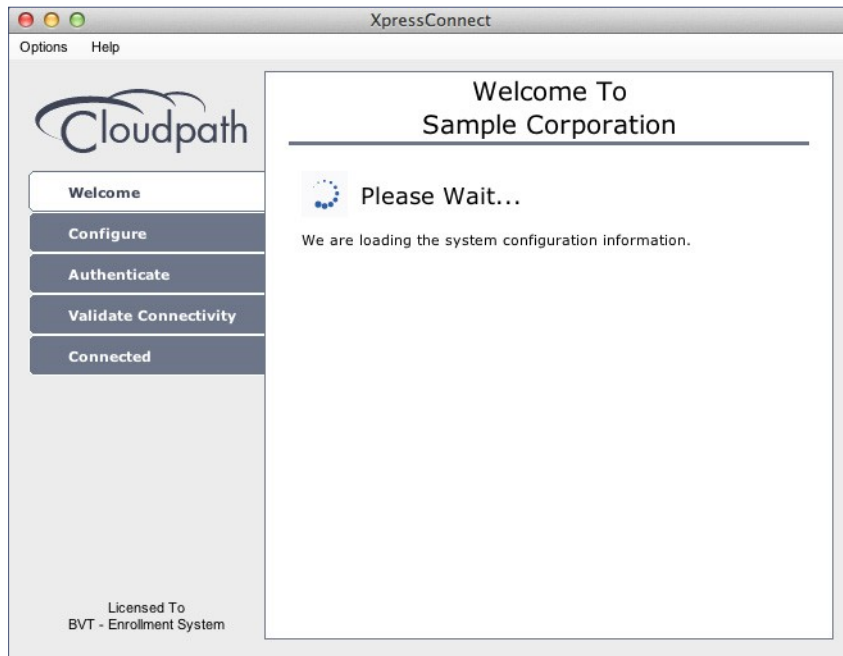
## Wizard Application User Experience

After the user has gone through the enrollment prompts, the Wizard runs to configure the wireless network settings on the device.

### Loading System Configuration

The Wizard opens and begins the configuration process.

FIGURE 10. PleaseWait

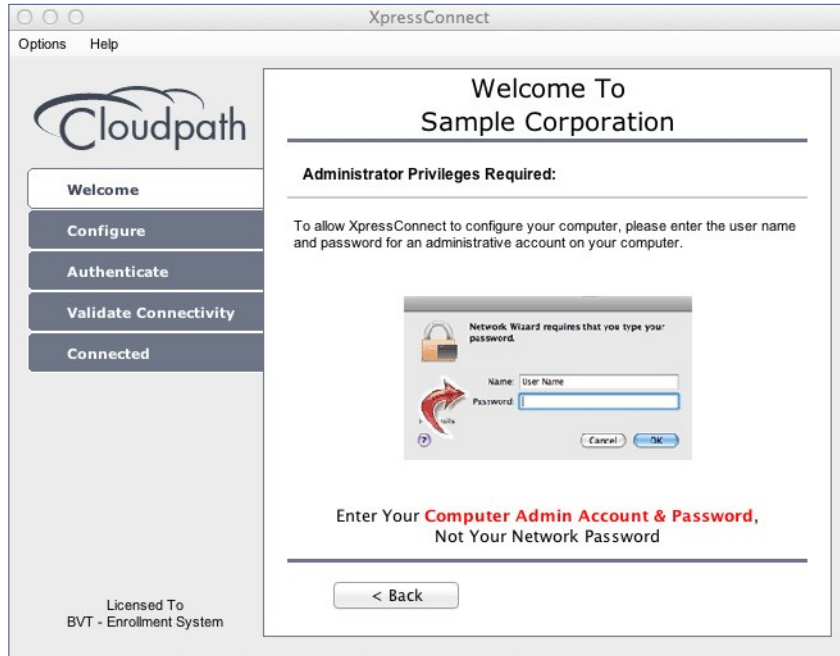


The configuration process takes less than a minute.

## Prompt for Privileges

The certificate installation requires an administrative password.

FIGURE 11. Prompt For Privileges



The Mac OS X system prompts for each certificate installed on the device. If multiple certificates are required, you may be prompted for each certificate.

## Administrator Credentials

The operating system requires elevated privileges to load certificates on the device.

FIGURE 12. Enter Administrator Credentials

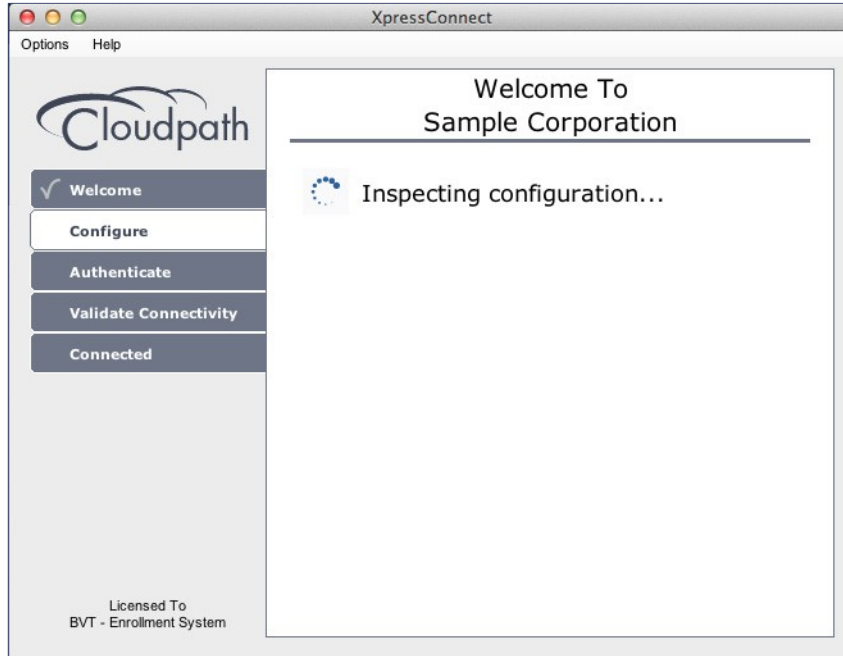


Enter the administrator password and click *OK*. The application continues with the configuration process.

## Inspecting Configuration

The application verifies that your computer's configuration is correct for the secure network.

FIGURE 13. Inspecting Configuration

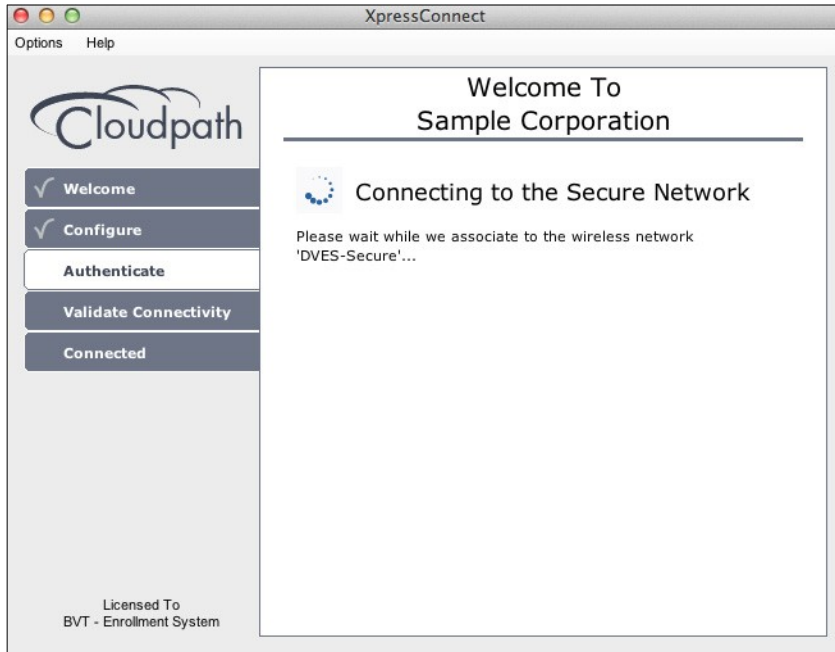


The application continues with the authentication process.

## Connecting to Secure Network

The application attempts to associate to the wireless network.

FIGURE 14. Connection to SecureNetwork

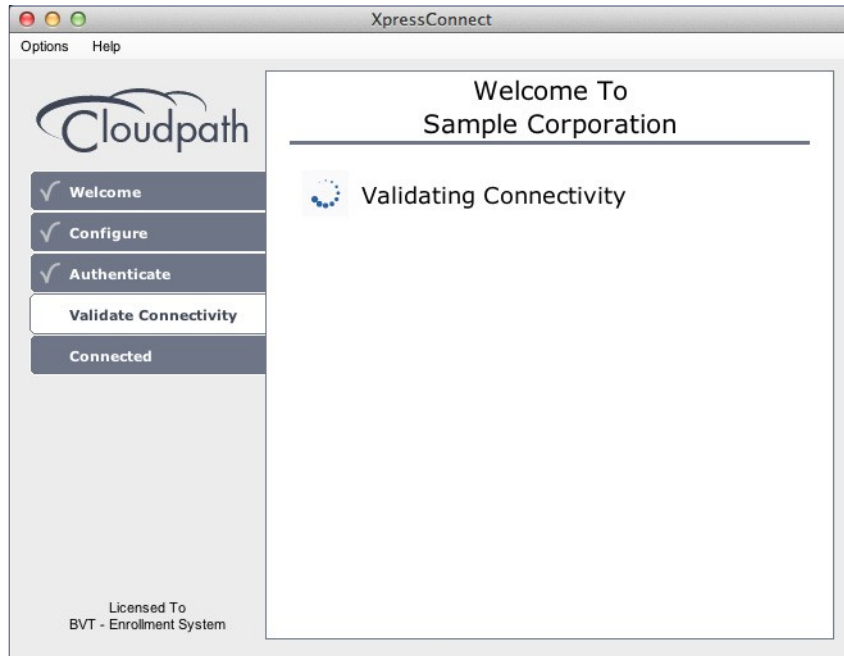


The application continues with the validation process.

## Validating Connectivity

When the association with the secure network is successful, the application attempts to acquire a network address.

**FIGURE 15.** Validating Connectivity



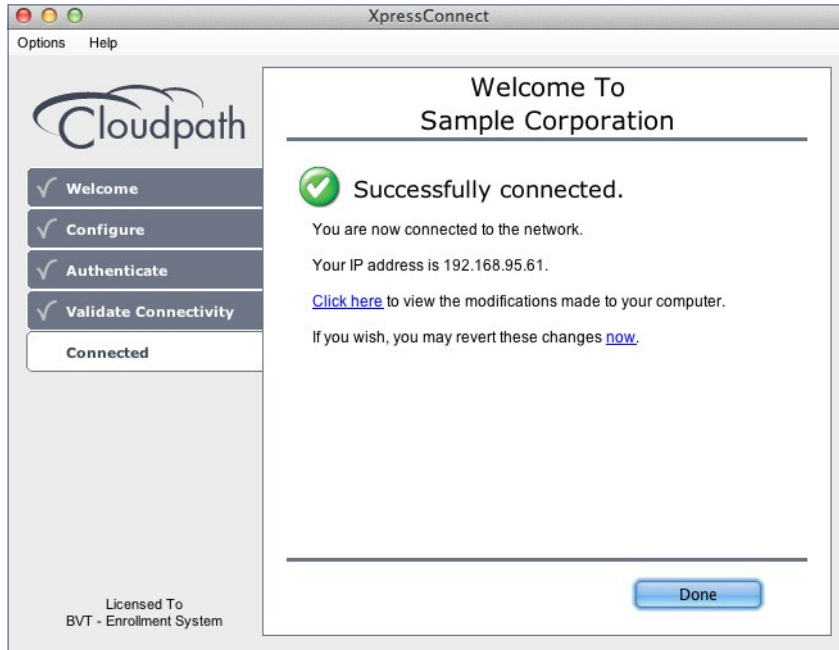
The application continues with the connection process.



## Connected to Secure Network

When the application displays a message that you have received an IP address, you are connected to the secure network.

FIGURE 16. Connected to Secure Network

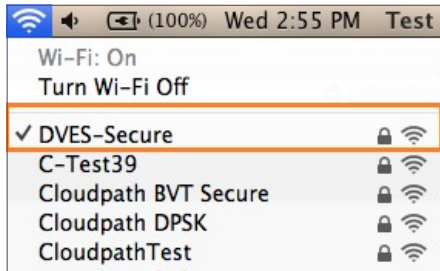


Click *Done*.

## Verify Network Connection

Whether using the application to migrate the device, or manually connecting to the network, use the airport icon in the menu bar to verify the network to which you are connected.

FIGURE 17. SecureNetwork



A check mark indicates the network to which you are connected.

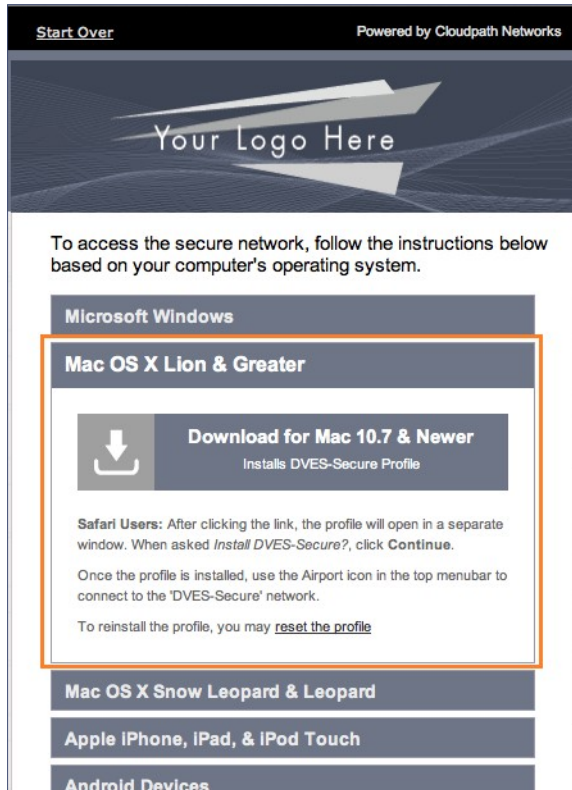
## Install Network Profile to Configure Wi-Fi

Alternatively, the network administrator can set the Mac OS X user experience to download and configure the wireless settings on the device using a network profile.

## Download Page

If the user experience is set to use a network profile, the Profile Download page displays after the user has gone through the enrollment workflow steps.

FIGURE 18. Download Profile Page

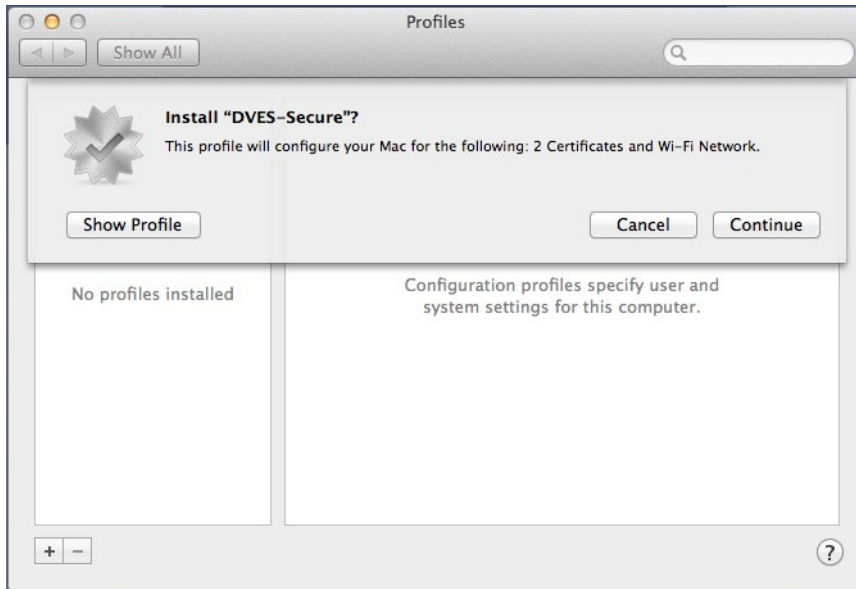


Click the down arrow to download the profile. If a profile has been previously installed, use the *Reset the Profile* link.

## Install Profile

You are prompted to install the network profile on the device.

FIGURE 19. Install Profile

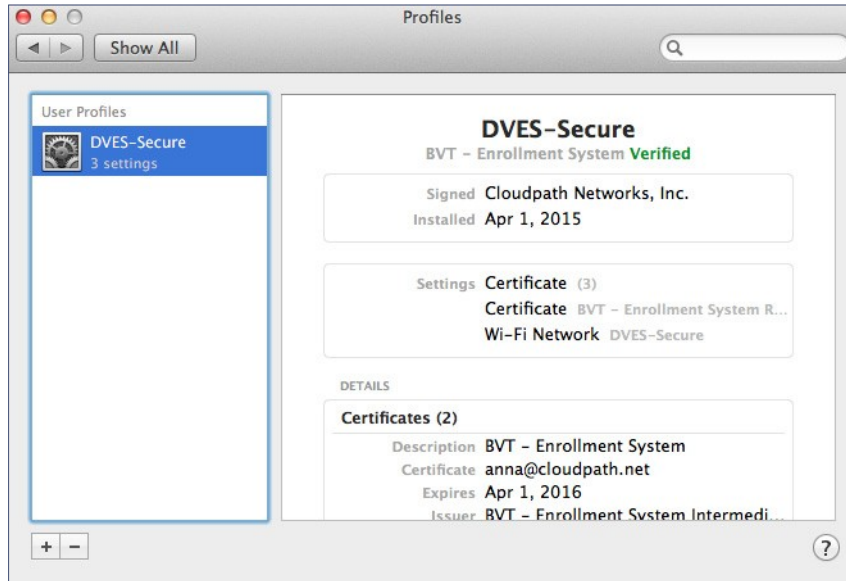


Click *Show Profile* to view profile details. Click *Continue* (or *Install*) to install the network profile. Continue with profile installation.

## Profile installed

The profile has been installed when you receive this confirmation page.

FIGURE 20. Profile Installed

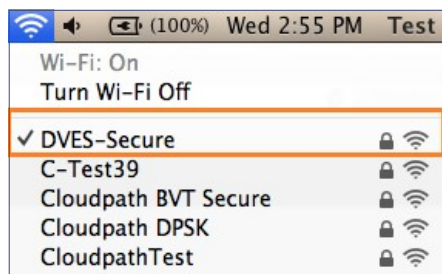


Close this page and proceed with connecting to the wireless network.

## Join Wireless Network

When the wireless configuration is installed using a network profile, you must manually connect to the secure network. Use the airport icon in the top menu bar to select the specified network.

FIGURE 21. SecureNetwork



A check mark indicates the network to which you are connected.