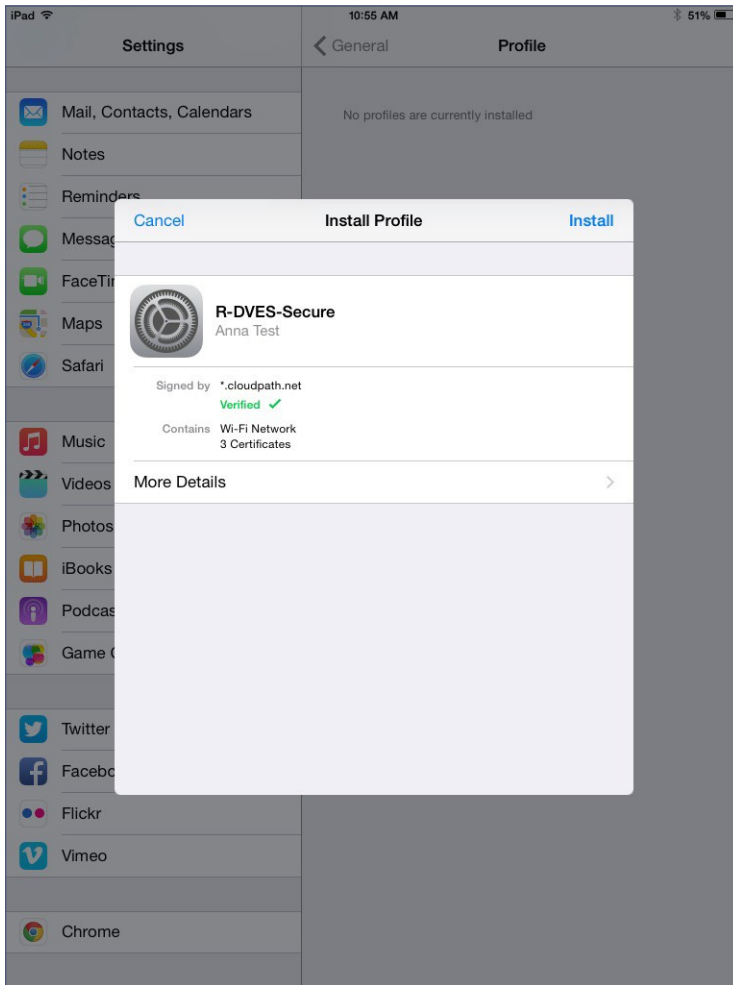


## Install Profile

You are prompted to install the network profile on the device.

FIGURE 5. Install Profile

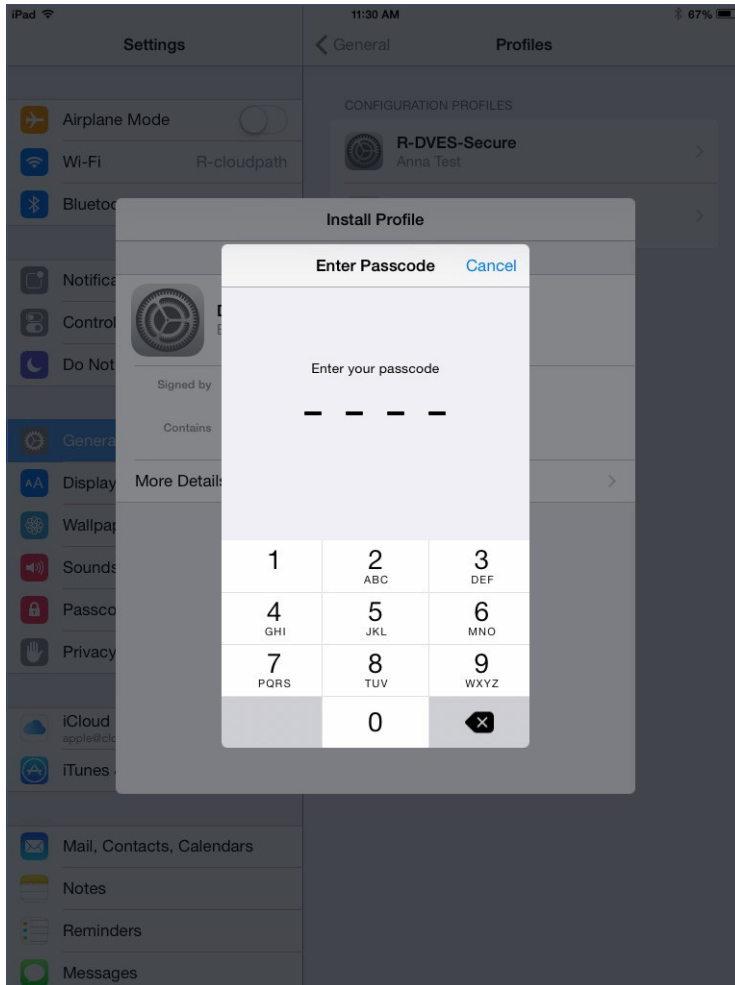


Tap *Install* to continue.

## Enter passcode

Enter device passcode to install the profile.

FIGURE 6. EnterPasscode

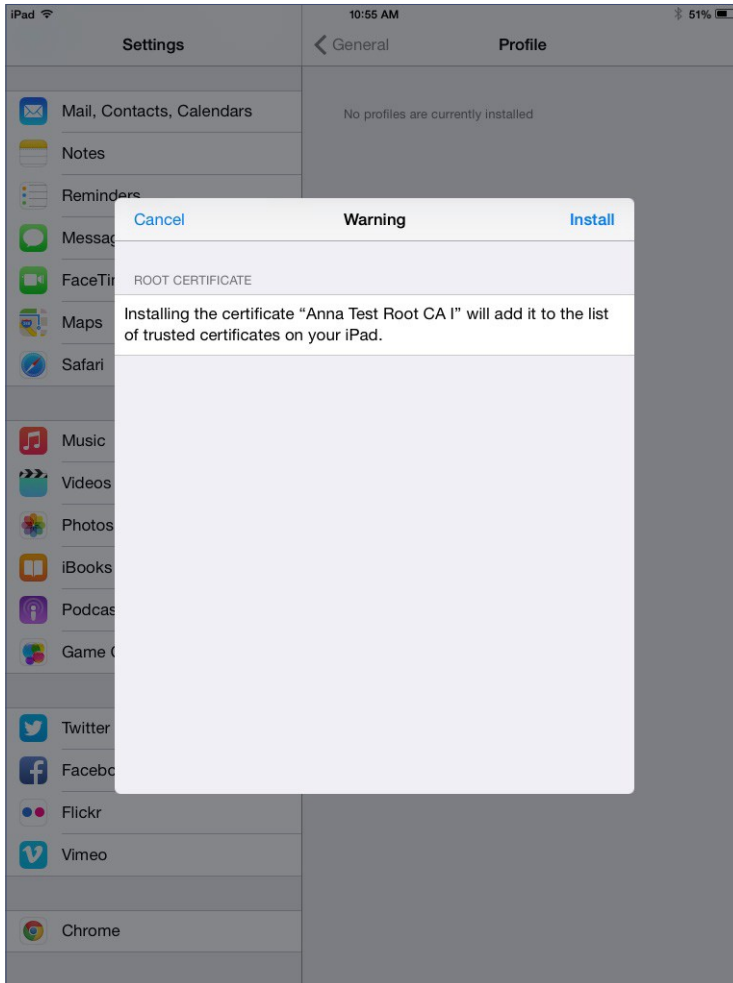


Continue with profile installation.

## Install Root CA

The Wi-Fi profile includes the root CA. Other certificates might be required by your network.

FIGURE 7. Install RootCA

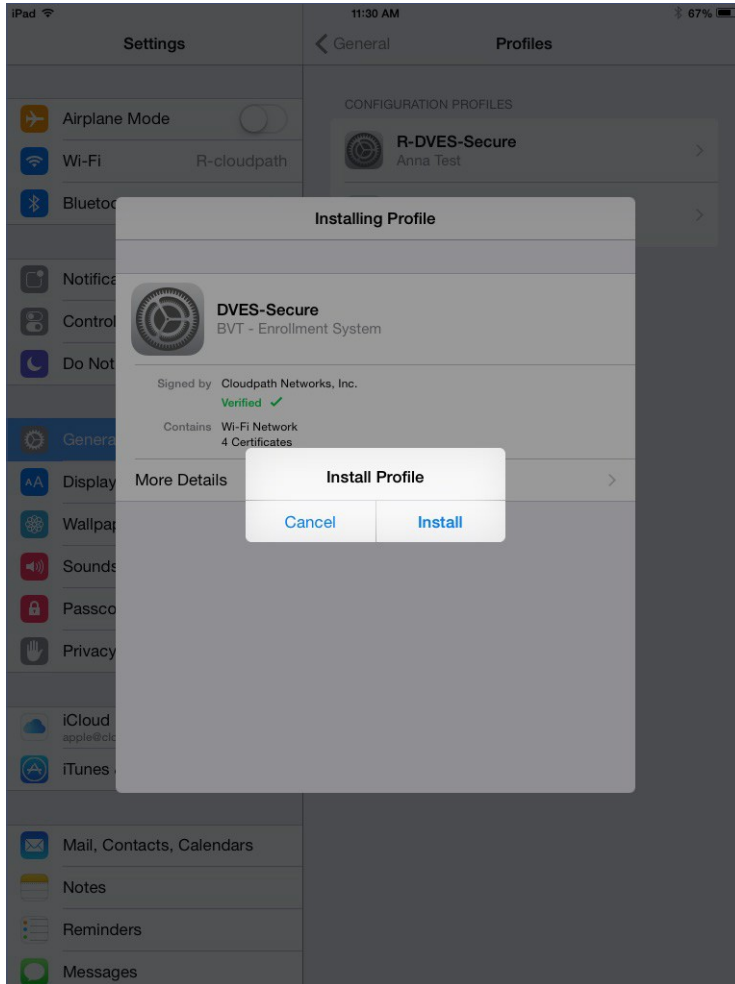


Tap *Install* to continue.

## Confirm Install Profile

Confirm the profile installation.

FIGURE 8. Confirm Install Profile

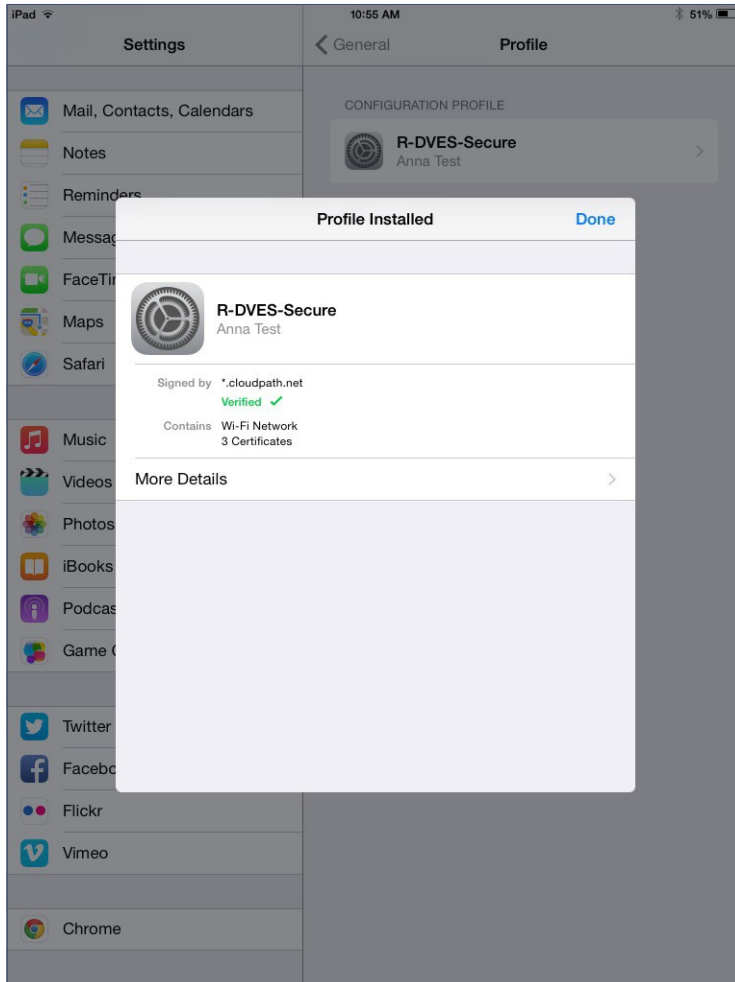


Tap *Install* to continue.

## Profile installed

The Wi-Fi has been installed when you receive this confirmation page.

FIGURE 9. Profile Installed

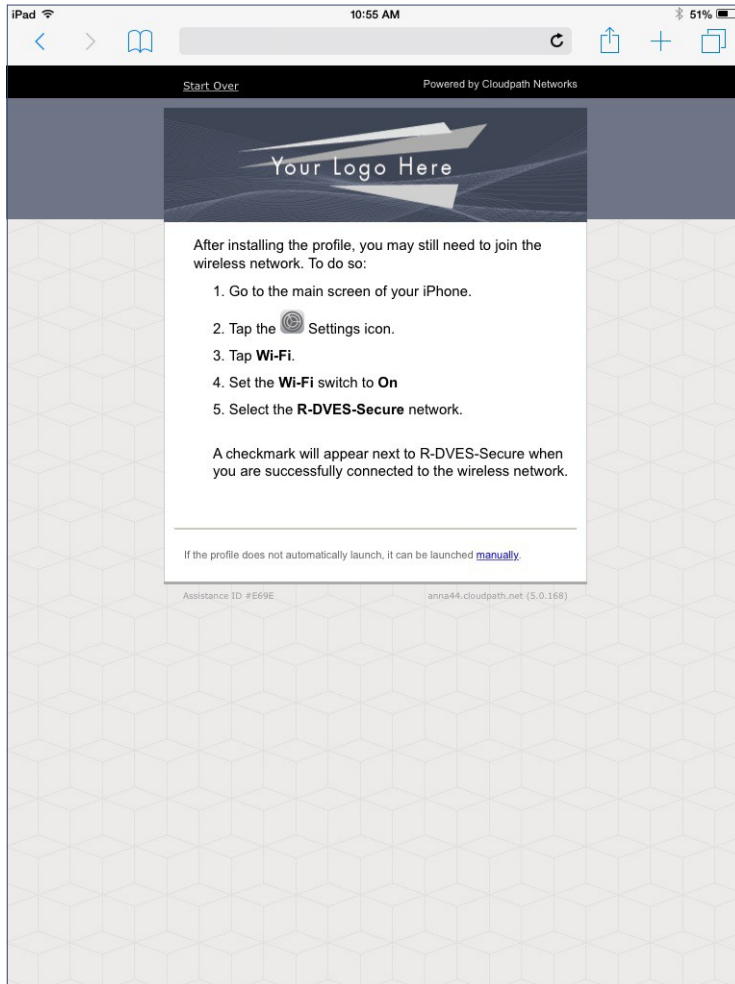


Tap *Done* to continue.

## Join Wireless Network

The Wi-Fi configuration page displays the instructions for connecting to the CCS-Secure-Wireless network.

FIGURE 10. Join Wireless Network

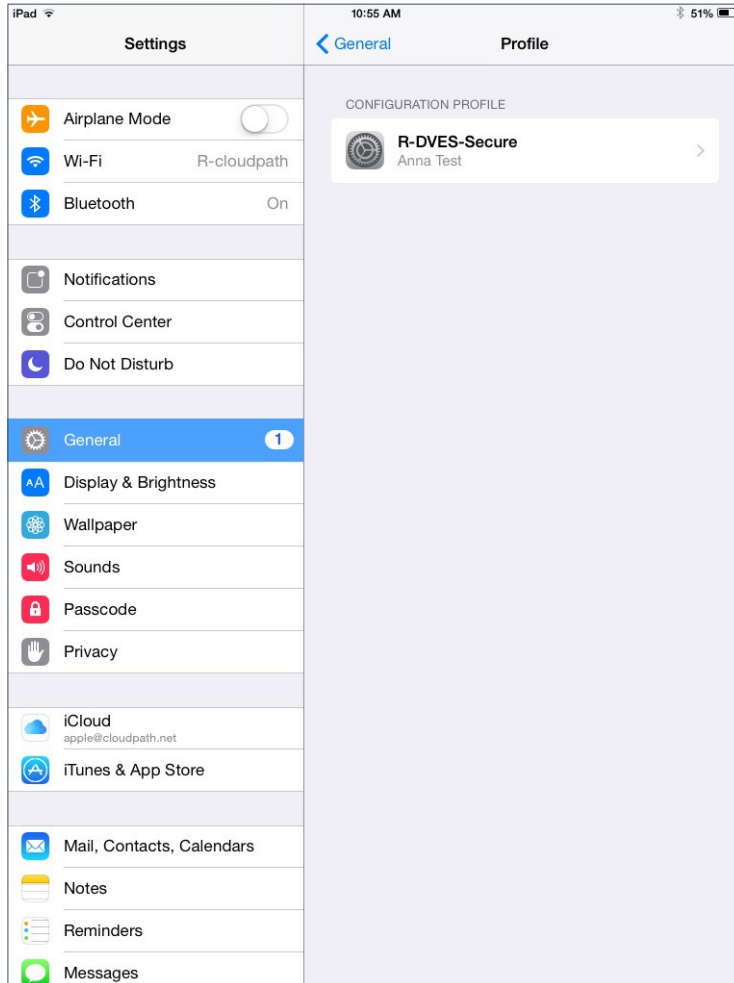


Go to your home screen and tap the *Settings* to connect to the secure network.

## View Profile

In the *Settings* > *General* tab, you can view the profile for the secure network.

FIGURE 11. View General Profile

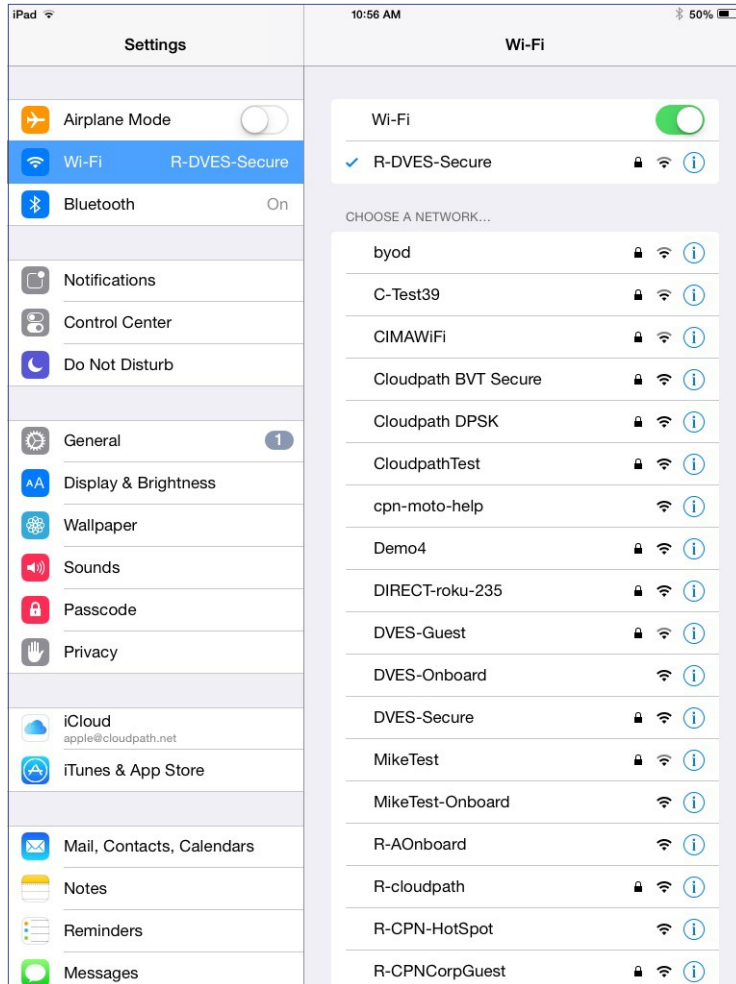


Tap the *Wi-Fi* tab to continue.

## Connect to Secure Network

Select the network listed on the Wi-Fi configurationscreen.

FIGURE 12. Connected to Secure Network



You should now be connected to the CCS-secure-wireless network.